



"KUTCH NAHI DEKHA TO
KUCHI NAHI DEKHA"





Hodka

Embroidery
Leather Work

Nirona

Lacquer, Copper Bell
and Rogan Art

Khamir

Block printing and Weaving

LLDC, Ajrakhpur

Bhuj

Hunarshala

Bhujodi

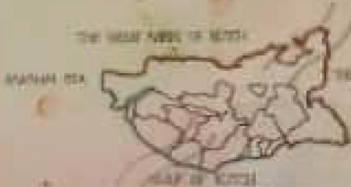
Tie and Dye

Rann of
Kutch Lake

Gulf of Kutch



GUJARAT
STATE IN WESTERN INDIA
CAPITAL - GANDHINAGAR



KUTCH
DISTRICT OF GUJARAT
LARGEST DISTRICT BY COVERING AREA OF 45,472 KM²
HAS WET AND DRY AREA KNOWN AS RANN OF KUTCH

FLORA AND FAUNA

37 SPECIES OF GRASS, 275 BIRDS SPECIES
DOMESTICATED ANIMALS LIKE SHEEP, GOATS, CAMEL, BUFFALO, HORSE
DATE, PALMS, SHEKODI, MANGO

CLIMATE

- HOT AND DRY
- COLD DURING WINTER
- MAX: 44°C, MIN: -42.01

LANGUAGE



PEOPLE



FOOD

BATTER AND EDIBLE BREAD, GHEE AND GUD,
MUSTARD SEEDS AND LARDER



FESTIVAL

Rann Utsav

CULTURE

FAMOUS DESTINATION - KHAMRAN MARKET
RAINBOW TEXTILE FOR HANDICRAFT
ARTISAN OF NEARBY VILLAGES BRING THEIR NETWORK
FOR SALE OF BURL

RELIGION

DOMINANT - VAISHNAV HINDUISM, JAINISM
AND ISLAM
SHAKTIPARAYAN HAS HUGE FOLLOWING

OCCUPATION

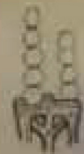
MAIN OCCUPATION IS TRADE OF HANDICRAFTS
OTHER IS FARMING

TRANSPORTATION

RAILWAY STATION



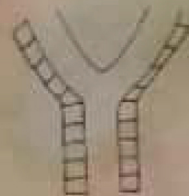
INTERIORS



AIRWAYS



ARCHITECTURE



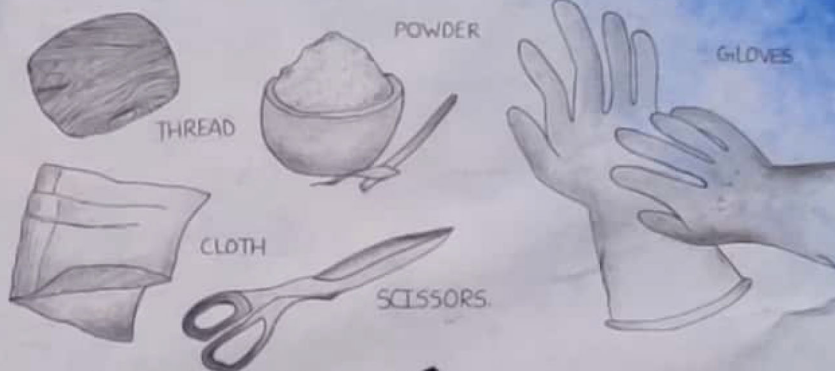
Y-JUNCTION STREET PATTERN

INTRODUCTION

A HANDMADE METHOD OF CREATING PATTERN NAME KHAIRI IN FABRICS. IN WHICH PARTS OF THE FABRIC ARE TIGHTLY BOUND WAYS TO STOP THE DYE SOLUTION. THERE BY PRODUCING A MULTICOLOUR PATTERN.
 MODERN NAME TIE AND DYE INVENTED IN MID 1860'S BANDHANI BEGAN 5000 YEARS AGO IN RAJASTHAN AND GUJARAT

ARTISAN

RAW MATERIALS AND TOOLS



PROCESS



PRINTING DESIGN TO TRANSFER ON FABRIC

TYING PARTS OF FABRIC ARE TIED ACCORDING TO THE DESIGN

DYEING TIED CLOTH IS DYED IN BOILING WATER

THE KNOTS ARE REMOVED TO REVEAL THE DESIGN

PRODUCT RANGE



DESIGN APPLICATIONS



COLOUR PALETTE



INTRODUCTION

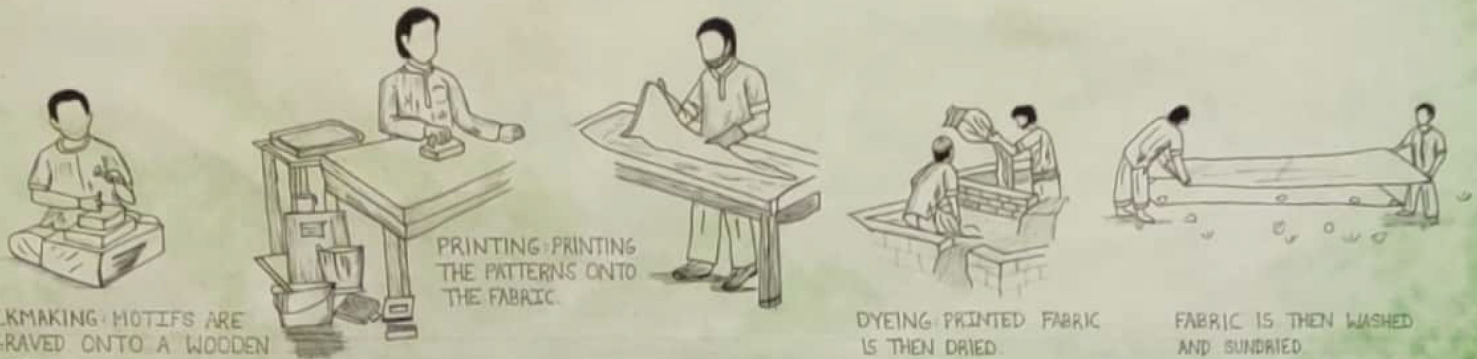
THIS IS ONE OF THE SKILLED CRAFTS OF KUTCH IN WHICH THE DESIGN PATTERNS CARVED ON WOODEN BLOCKS ARE IMPRINTED ON TEXTILES WITH RESISTING MATERIAL. THE CLOTH IS THEN DYED AND CLEANED TO FINALLY ACHIEVE COLOURFUL PRINTS. THERE ARE THREE MAIN TYPES OF BLOCK PRINTING - AJRACH BLOCKPRINT - BATIK PRINTS - BELA PRINTING. BELA PRINTS ARE BOLD AND GRAPHIC. VIBRANT PALETTE OF PRINTED COLOUR ON A PLAIN WHITE BACKGROUND. DIVERSE HUES ARE ACHIEVED USING NATURAL AND VEGETABLE DYES. RED AND BLACK COLOURS ARE ICONIC OF BELA PRINTING. TODAY ONLY ONE BELA-STYLE PRINTERS REMAINS.

COMMUNITY HINDU KHATRI

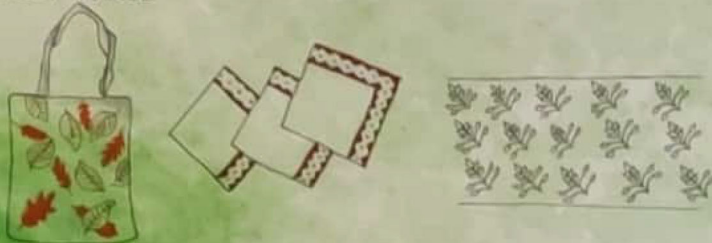
ARTISAN

NAME: KHATRI
MANSUKHBHAI
AGE: 55 YEARS

RAW MATERIALS AND TOOLS



PRODUCT RANGE



DESIGN APPLICATION



COLOUR PALETTE



INTRODUCTION

LAC HAS BEEN USED IN INDIAN CRAFT FOR CENTURIES.
COLOURED LACQUER IS APPLIED ON USED IN LAYERS AND CHISELLED
TO CREATE DESIGN.
NIRONA IS THE MAIN CENTRE WITH MAXIMUM NUMBER OF
PRACTICING ARTISANS.
7 GENERATIONS WORK.
LAC - MATERIALS TAKEN FROM INSECT RESIN.
COMMUNITY: VADHA
CENTERS: ZURA, NIRONA, FULAY, MISIRYADD.

ARTISAN

NAME: POPAT
BHAJ
AGE: 32
EDUCATION:
10th PASS

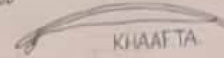
RAW MATERIALS AND TOOL



CARVING TOOL



LOREWOOD



KHAAF TA



LAC

LATHE MACHINE

PROCESS



THE WOOD IS CUT.



LACQUER IS HEATED WITH
COLOUR.



A HALF SELF MADE LATHE IS
USED TO APPLY LAC TO WOOD



COLOURED WOODEN ARTICALS
ARE USED TO MAKE FURNITURE



FINAL PRODUCTS

PRODUCT RANGE



DESIGN APPLICATIONS



COLOUR PALETTE



INTRODUCTION

COPPER COATED BELLS FROM KUTCH IN GUJARAT WERE TRADITIONALLY MADE IN SINDH (NOW IN PAKISTAN). THE ART HAS BEEN PASSED DOWN OVER GENERATIONS. NOW IT IS MOSTLY MADE BY MUSLIM LUHARS. MAIN CENTERS BEING KUNARIYA, RATAOYA AND BHUJ WITH AROUND 50 ARTISANS UNITS.

COMMUNITY: MUSLIM LUHAR

PROCESS



A BELL IS SHAPED FROM SCRAP METAL.



CREATE DOME SHAPE BY INTERLOCKING ENDS.



DIPPED IN MIXTURE OF POWDERED BRASS AND CLAY.



WRAPPED IN CLAY AND BAKED.



BELLS ARE WORN BY CATTLES.

PRODUCT RANGE



RAW MATERIALS AND TOOLS

ARTISAN
NAME: HUSSEIN
SIDDIQ LUHAR
(UMARBHVA)

OCCUPATION:
LUHAR

SCHEDULE:
FULL DAY
METAL MOLDING



METAL STONE



HAMMER



NEEDLE



GOLAI

DESIGN APPLICATIONS



COLOUR PALETTE



INTRODUCTION

- 400 YEAR OLD CRAFT.
- ART OF CLOTH PRINTING
- PAINT MADE FROM BOILED VEGETABLE AND OIL.
- CRAFT CAME TO END BY LATE 20TH CENTURY.
- PRACTISED BY ONLY TWO FAMILIES IN SAME VILLAGE.
- ROGAN ART CAME FROM PERSIAN.
- FABRIC BEGAN AMONG THE KHATRIS.
- CAME TO INDIA FROM SINDH.
- MAIN THEME OF ART: TREE OF LIFE.
- MR. ABDUL GAFUR KHATRI WAS AWARDED PADMSHREE.

ARTISAN

NAME: ABDUL
GAFUR KHATRI

AGE: 54 YRS

LOCALITY:
NIRONA

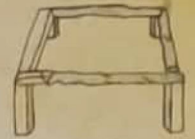
RAW MATERIALS AND TOOLS



CLOTHE

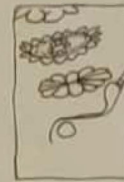


ROGAN GEL



TABLE

PROCESS



PREPARATION OF ROGAN
GEL-BOILING OIL IN AN
EARTHEN POT FOR 12 HRS.

DYED PIGMENT IS MIXED
WITH THE OIL AND STORED
IN A BOWL CONTAINING WATER.

WITH THE SUPPORT OF HAND
BENEATH THE CLOTH, USING STYLUS
THE DESIGN IS DRAWN ON THE CLOTH.

PRODUCT RANGE



DESIGN APPLICATIONS



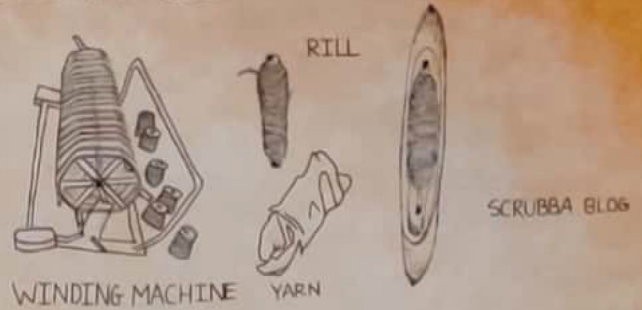
COLOUR PALETTE



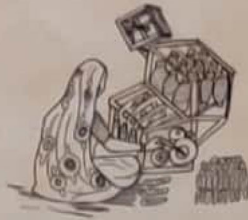
INTRODUCTION

DISTINCT STYLES OF DRESSING AND DECORATION WHICH DISTINGUISHES ONE COMMUNITY FROM OTHER ALSO SPEAK ABOUT THE ARTISANS BEHIND THE DECORATIVES CLOTHES. EACH FAMILY IN BHUTODI IS HAVING MORE THAN TWO EITHER WEAVING FOR THE LOCAL PURPOSE OR FOR THE COMMERCIAL. THE BEST KNOWN PART OF THE HAND WEAVING PROCESS IS THE ACT OF THROWING THE SHUTTLE AND BEATING THE WEFT BUT THIS IS JUST THE END OF THE WHOLE HAND-WEAVING PROCESS.

RAW MATERIALS AND TOOLS

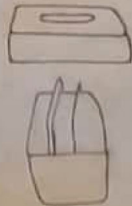
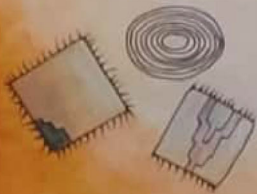


PROCESS



YARN IS WOVEN INTO FABRIC.

PRODUCT RANGE



DESIGN APPLICATIONS



COLOUR PALETTE



INTRODUCTION

KHAMIR IS A PLATFORM FOR CRAFTS, HERITAGE AND CULTURAL ECOLOGY OF KUTCH REGION OF GUJARAT. KHAMIR STANDS FOR KACHCHH HERITAGE, ART, MUSIC, INFORMATION AND RESOURCES. KHAMIR MEANS 'INTRINSIC PRIDE'.

LOCATION: BEHIND B.M.C.B. SOCIETY AT LAKHOND CROSS ROAD, KURMA ROAD, BHUT

CONTEXT: OUTSKIRTS OF CITY 10 KM FROM BHUT

TOPOGRAPHY: GENTLE CONTOURS SITE AREA: 909371 SQ.M.

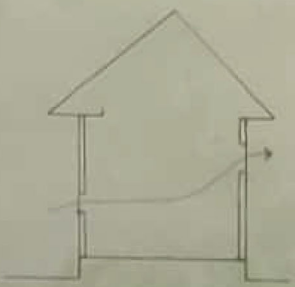
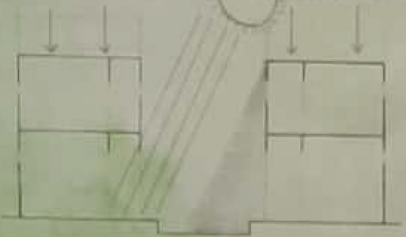


CONCEPT OF PLANNING THIS CENTRE IS DERIVED FROM LOCAL STREET SCAPE AND VILLAGES PATTERN NOTED BEFORE EARTHQUAKE FORMING CHOWKS AND COURTS. THE BUILDINGS OF KHAMIR THUS EMULATE THE STRUCTURE OF THE TRADITIONAL VILLAGES IN KUTCH REGION. WORKSHOP UNITS CLUSTURED TOGETHER TO FORM NARROW STREETS AND SHADED SPACES, AND THE STREET DIVIDES AND MEETS INTO COURTYARDS AND CHOWKS.

A SERIES OF PROGRESSIONS AND SPACES PAUSE - NARROW LANE WAYS CHASE THE LIGHT INTO THE COURTYARDS AND CHOWKS. THE MATERIALITY IS CONTEXTUALIZED WITHIN THE DISCOURSE OF THIS THOUGHT. IT IS A MANIFESTATION OF IDEA OF LOCAL AVAILABILITY.

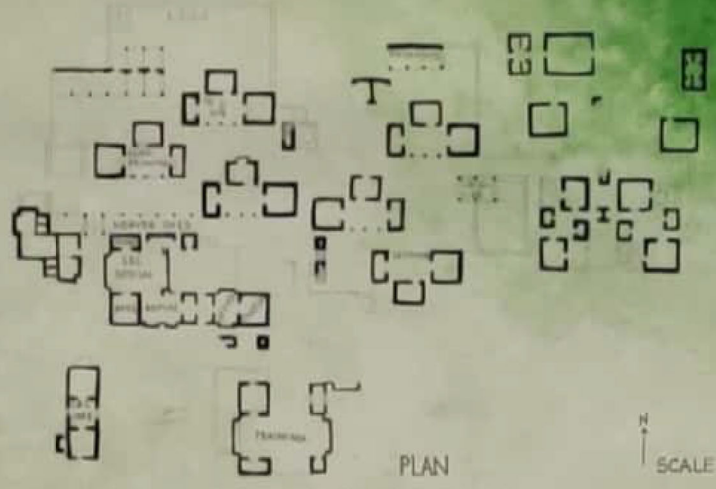
CLIMATIC CONSIDERATIONS

BUILDING REMAINS COOL IN EXTREMELY HOT SUMMERS AND WARM IN COLD WINTERS. USE LIGHT COLOURS FOR EXTERNAL.

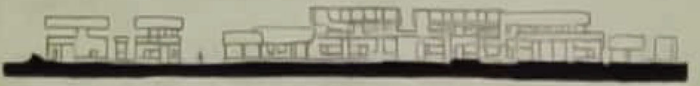


OUTLET LARGER

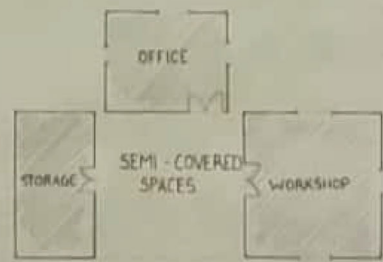
INLET AT LOWER LVL. OUTLET AT HIGHER LVL.



SCALE 1:25



SECTION



INTRODUCTION

POTTERY HAS BEEN CALLED THE LYRIC OF HANDICRAFTS BECAUSE OF ITS IRRESISTIBLE AND UNIVERSAL APPEAL THERE IS A WIDE RANGE OF POTTERY AND CLAY CRAFTS IN INDIA SOME OF THE MOST POPULAR FORMS OF POTTERY INCLUDE BLUE POTTERY, BLACK AND RED POTTERY, ROULETE WARE AND DULL RED AND GREY WARE. THE CRAFT FACES SEVERE COMPETITION FROM INDUSTRIAL GOODS MADE UP OF ALUMINIUM AND PLASTIC. INDIA HAS A RICH TRADITION OF CLAY CRAFTS AND POTTERY THROUGHOUT THE COUNTRY. ASHIRKANDI IN ASSAM IS THE LARGEST CLUSTER IN INDIA, WHERE TERRACOTTA AND POTTERY CRAFTS IS FOUND. OTHER CLUSTERS ARE BHADRAWATI, BULANDSHAHAR, NIZAMABAD, PUNE, CHANORAPUR, ETC.

COMMUNITY MUSLIM KUMBHAR

ARTISAN RAW MATERIALS AND TOOLS

NAME ABUL KUMBHAR

OCCUPATION KUMBHAR

SCHEDULE FULL DAY POTTERY



SPONGE



WOOD MODELING TOOL



RIBBON TOOL



LOOP TOOL



NEEDLE



WIRE CLAY CUTTER



WOOD POTTERS RIB



STEEL SCRAPER



THE CLAY IS PREPARED

CLAY IS SHAPED ON A WHEEL

THE POT IS TAPPED TO GIVE IT A BETTER

SHAPE.

THE POT IS BAKED AND COLOURED IN A KILN.

THE FINAL PRODUCT IS THEN BAKED.

PRODUCT RANGE



DESIGN APPLICATIONS



COLOUR PALLETTE



DAY 1 - 16th DEC, 2019

DRINK IN BELL
SEWING WORKSHOP
BELLA BLOCK PRINTING BANDS ON
WORKSHOP

SUMMARY

AFTER ARRIVING AT KHAMUK CRAFT RESOURCE
CENTER, HAD A SMALL ORIENTATION ON
CITY'S HISTORY AND CULTURE AND THE
ARTS SET AND CRAFTS
ARTISANS AT KHAMUK WERE VERY PASSION-
ATE ABOUT THEIR WORK.
WE MET WEAVERS AND OBSERVED THEIR
WORKING STYLE
THEREAFTER, HAD HANDS ON WORKSHOP
OF BELLA BLOCK PRINTING WITH MANSUKH
KHATU, AN ARTISAN.

DAY 4 - 19th DEC, 2019

VISIT TO NIRONA VILLAGE
LACQUERED WOOD HANDS ON WORKSHOP
COPPER COATED METAL BELLS
ROGAN ART
LEATHER WORK
EMBROIDERY

SUMMARY

NIRONA VILLAGE IS APPROX 40 KM FROM BELLU.
WE PERFORMED HANDS ON WORKSHOP FOR
LACQUERED WOOD
WE VISITED AND WATCH THE PROCESS FOR CRAFT
LIKE COPPER BELLS, ROGAN ART, LEATHER
AND EMBROIDERY
WE VISITED GROUP OF ARTISANS WHERE
THEY EXHIBIT THEIR WORK.

DAY 2 - 17th DEC, 2019

TIE AND DYE HANDS ON WORKSHOP
VISIT TO BHOJ HOUSE
- JESSEN STUDIO SITE VISIT

SUMMARY

WE PERFORMED HANDS ON WORKSHOP FOR TIE
AND DYE WITH TARANJAN KHATU, THE
ARTISAN.
WE VISITED BHOJ HOUSE WHICH WAS BUILT
IN LATE 1800'S. IT WAS A DELIGHTFUL ROOM-
ROOM HERITAGE HOMESTAY.
DESIGN STUDIO SITE HAS 2 MAJOR CONTEXTS:
- SHARAD BAUG PLACE
- HANIKSHAR LAKE.

DAY 5 - 20th DEC, 2019

POTTERY
BRUNGA
WHITE DESSERT

SUMMARY

ARTISAN DEMONSTRATED HIS SKILLS AND SHOWED
US THE ARTIFACTS HE ALREADY CREATED. VISIT
TO THE TRADITIONALLY MADE BRUNGA WAS
ABOUT THE DETAIL STORY OF THE SAME.
WE VISITED THE WHITE DESSERT AT THE
TIME IT IS HANDS FOR I.E. POINT.

DEPARTURE JAMNAT KITCH IN THE EVENING

DAY 3 - 18th DEC, 2019

LJDC
JEDARWALA FOUNDATION
SHARAD BAUG PLACE
- BHOJ MARKET

SUMMARY

WE VISITED LJDC, A THREE BUILDINGS AND
EIGHT ACRE CAMPUS IN JEDARWALA,
JEDARWALA, ECO FRIENDLY AND DISASTER
SAFE CONSTRUCTION.
THEREAFTER, WE VISITED SHARAD PALACE
AND BHOJ MARKET.

DAY 6 - 21st DEC, 2019

- REACHED VADGDARA IN THE MORNING.

